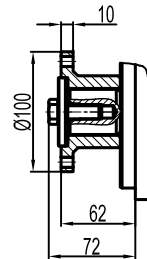
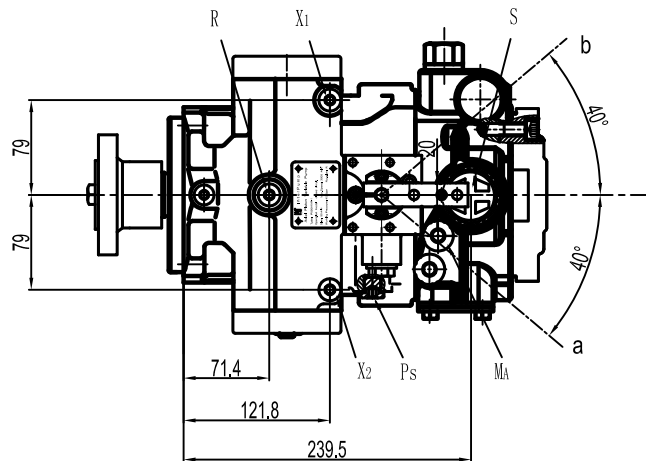
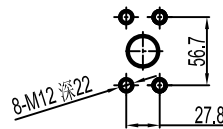
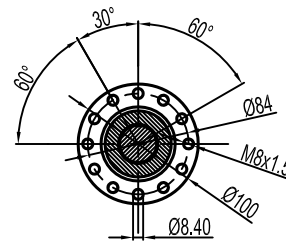


A, B 油口法兰



A-A



油口

| Designation/标记 | Fuction/功能 | Standard/标准 | Size/尺寸 | Peak Pressure/尖峰压力(bar) |
|---------------------------------|--|-------------|---------|-------------------------|
| A, B | Service line Fixing Thread/ 工作油口 | SME J518 | 1 in | 450 |
| T ₁ , T ₂ | Tank/泄油口 | DIN 3852 | M26×1.5 | 3 |
| S | Suction/ 补油泵吸油口 | DIN 3852 | M42×2 | 5 |
| M _a , M _b | Measuring Pressure/ 工作油测压口 | DIN 3852 | M12×1.5 | 420 |
| R | Air bleed/排气孔 | DIN 3852 | M12×1.5 | 3 |
| X ₁ , X ₂ | Control pressure (upstream of orifice)/ 变量压力口 | DIN 3852 | M12×1.5 | 40 |
| P _i | Pilot pressure inlet 控制压力口 | DIN 3852 | M14×1.5 | 40 |

比例尺: 1:1
 图号: P090
 图名: P090变量柱塞泵
 设计: 李强
 审核: 王强
 日期: 2010.10.10